

1/7 Mikhailovskaya Ulitsa, 191186 St Peterburg, Russia
T: +7 812 329 6000 F: +7 812 329 6001

UNIQUE SUITES—IN RUSSIA'S CULTURAL CAPITAL

BELMOND.COM

 BELMOND
GRAND HOTEL EUROPE
ST PETERSBURG

HISTORIC SUITES

OUR HISTORIC SUITES ARE SUMPTUOUS SPACES
EVOKING TURN-OF-THE-CENTURY TSARIST
ELEGANCE. INDIVIDUALLY NAMED AND WITH
A UNIQUE THEME, EACH SUITE COMBINES
CONTEMPORARY COMFORT WITH AN OLD-
WORLD GRACE BEFITTING ONE OF RUSSIA'S
MOST ICONIC HOTELS.





DOSTOEVSKY SUITE

THE GREAT LITERARY GENIUS

19th-century Russian writer Fyodor Mikhailovich Dostoevsky, author of *Crime and Punishment*—which was set in the Haymarket, a short walk from the hotel—was a frequent guest. A quotation from the archives documents his reaction to the building's construction in the 1870s: “The architecture of this modern, huge hotel is efficiency itself”.

Aficionados of Dostoevsky's writing will note that it is a corner suite—the author preferred corner rooms, noting that, while busy writing, they were most convenient for observing street life outside. The living room contains a large desk for anyone inspired to create their own literary masterpieces.





CORNER ROOMS WERE A FAVOURITE OF DOSTOEVSKY.



19TH-CENTURY STYLE WALLPAPER ADORNS THE ROOMS.



IMPERIAL YACHT SUITE

HOUSE OF ROMANOV YACHT

The Derzhava was built in the style of *HMY Victoria and Albert*, the British royal yacht, for Emperor Alexander II (pictured above). Despite beamed ceilings and heavy walnut and mahogany furniture, it could reach speeds of up to 16.72 knots with its two steam engines. The striking figurehead, a two-headed eagle, was created by prominent St Petersburg sculptor, Mikeshin.

Today 21st-century guests can step inside this world of marine magnificence. The Imperial Yacht Suite is decorated in fresh, nautical colours with the bathroom in green and cream marbles. Carefully chosen artworks tell the story of this exceptional ship and evoke the lifestyle of those who sailed in her.



WHEN, IN 1871, TSAR ALEXANDER II
LAUNCHED THE ROYAL YACHT DERZHAVA,
THOSE PRIVILEGED ENOUGH TO STEP
ABOARD WERE STUNNED BY ITS
UNPRECEDENTED OPULENCE.





FABERGÉ SUITE

JEWELLER TO THE TSARS

Born in St Petersburg in 1846, Peter Carl Fabergé inherited his goldsmith father's business while still a young man and was selected by Tsar Alexander III to supply to the Court. The Tsar commissioned him to make a special Easter egg for the Empress and the famous Fabergé egg was born. These exquisite objets d'art, crafted from the most precious gems, are today among the world's greatest treasures.

The suite that bears Fabergé's name is decorated in tones of pink, lilac and gold, colours that reflect the precious materials he favoured in his artworks. Furniture and antique pieces, evocative of the turn of the 20th century, complete the elegant atmosphere.





FABERGE'S WORKS ARE EVOKED BY JEWEL-LIKE TONES OF PINK, LILAC AND GOLD.



FURNITURE AND ANTIQUES RECALL THE FIN DE SIECLE, FABERGE'S HEYDAY.



MARIINSKY SUITE

LEGENDS OF THE THEATRE

Over the years Belmond Grand Hotel Europe has hosted many luminaries from the worlds of music and ballet, from great choreographer Marius Petipa and prima ballerina Anna Pavlova (above), to Peter Tchaikovsky, Johann Strauss, and a young Dmitri Shostakovich who once played a sonata for Sergei Prokofiev.

Many of these stars performed at St Petersburg's legendary Mariinsky Theatre, which was built in the mid-19th century and named in honour of Tsar Alexander II's wife, Empress Maria. Those of an artistic nature will love the Mariinsky Suite's theatrical decor, with light blue tones and gilded plasterwork evoking the Mariinsky's sumptuous interiors.



BELMOND GRAND HOTEL EUROPE'S LONG ASSOCIATION WITH STARS OF THE RUSSIAN STAGE MAKES THE MARIINSKY THE PERFECT CHOICE FOR ONE OF ITS MOST OPULENT SUITES.





ROMANOV SUITE

RUSSIA'S LAST IMPERIAL DYNASTY

The House of Romanov ruled Russia for more than 300 years, from 1613 to 1917. One of the dynasty's most prominent members was Peter I, or Peter the Great, founder of St Petersburg. Inspired by his travels to Europe, he instigated sweeping social reforms and is credited with modernising the country. His palace, Peterhof, is often referred to as the "Russian Versailles". The Empire ended with Nicholas II (above), who abdicated following the February Revolution.

The lavish Romanov Suite, with its antique furniture, rich, gold ornamentation, delicate chandeliers and portraits of Russian nobility, is certainly fit for a tsar. It boasts five original lithographs donated by HRH Prince George Yourievsky, while books on the family history, presented by other descendants of the Romanovs, Paul Edward Kulikovsky and Michael Romanov-Iliinsky, have pride of place in the suite's exclusive library.





PORTRAITS OF RUSSIAN NOBILITY ADORN THE WALLS, COMPLEMENTING THE REGAL DECOR OF ANTIQUE FURNITURE, GOLD ORNAMENTATION AND CHANDELIERS.





ROSSI SUITE

Carlo di Giovanni Rossi was an Italian architect responsible for many of St Petersburg's finest neoclassical buildings. Among his masterpieces were Mikhailovsky Palace, now part of the State Russian Museum, and the bow-shaped General Staff Building, whose east wing houses part of the Hermitage collection. He also played an important role in the design of Belmond Grand Hotel Europe, uniting several properties behind one elegant façade in the 1820s.

The suite named in his honour is decorated in classic white and yellow—colours that grace so many of his architectural triumphs. Its clean lines reflect the skilful way in which he combined Empire grandeur with elegant simplicity.



THE ELEGANT FACADE ROSSI DESIGNED FOR
BELMOND GRAND HOTEL EUROPE, WHICH UNITED
THREE PROPERTIES, CAN BE APPRECIATED
FROM NEVSKY PROSPEKT.





AMBER SUITE

The Amber Room at Catherine Palace, Tsarskoye Selo, is considered one of the wonders of the world. A priceless artwork, consisting of amber panels, gold leaf, mosaics, mirrors and precious gems, it was crafted by German and Dutch masters for the Prussian king, Friedrich Wilhelm I, who then presented it to Peter the Great (above). During World War II the original room was stolen by Nazi soldiers and never recovered—the chamber you see today is a meticulous recreation that took over 20 years to complete.

Our own Amber Suite recalls the gleaming magnificence of the legendary room through warm ochre and cinnamon tones and decadent imperial touches.





THE AMBER SUITE'S LIVING ROOM CONTAINS A REPRODUCTION OF THE CARTOUCHE FEATURING THE INITIALS OF KING FRIEDRICH WILHELM OF PRUSSIA, WHO PRESENTED THE AMBER ROOM TO PETER THE GREAT IN 1717.





STRAVINSKY SUITE

In 1914 Russian composer Igor Stravinsky left his homeland and moved first to Europe and then to the USA, only returning to the Soviet Union in 1962. During his visit, he gave several concerts in Moscow and St Petersburg, staying at Belmond Grand Hotel Europe for the latter.

Stravinsky's avant-garde 1913 composition, *The Rite of Spring*, is considered one of the seminal works of the 20th century. Its theme of reawakening is reflected in the suite's fresh, joyful green hues and the beautiful Verde Guatemala and Carrara marbles in the bathroom. The gleaming grand piano is a particular draw for our musical guests.



WHEN GREAT COMPOSER IGOR STRAVINSKY RETURNED TO RUSSIA AFTER 48 YEARS OF LIVING OVERSEAS, BELMOND GRAND HOTEL EUROPE WAS HIS FIRST PORT OF CALL.





PAVAROTTI SUITE

The celebrated Italian tenor stayed in this very suite during his farewell tour of 2004. Though it was his first proper visit to St Petersburg, he admitted he had always dreamed of performing here. The suite has hosted many other prominent musicians visiting the city, for the antique piano in the living room enables them to rehearse in comfort and privacy.

The Pavarotti Suite's bold colour scheme, dominated by hues of gold and red, reflects the dynamic tenor's charisma. Walls are decorated with photographs of the maestro and other well-known personalities; the bathroom is finished in contrasting black and pink marbles, including Rosso Verona from his Italian homeland. CDs of Pavarotti's most popular arias are available in the room.





INTERIORS ARE STYLED TO EVOKE THE WORLD'S FINEST OPERA HOUSES—
PALAIS GARNIER IN PARIS AND LA SCALA IN MILAN.





LIDVAL SUITE

This ravishing suite is named in honour of Fyodor Lidval, one of the greatest early 20th-century architects to work in St Petersburg.

A master of Art Nouveau, Lidval helped redesign the hotel's interiors, including the Lobby Bar and Krysha Ballroom, between 1908 and 1914.

Beautifully-restored stucco adorns the living-room walls, while the spacious bathroom features marble, contrasting lacquered wood and a dramatic image of a sturgeon. Such motifs distinguish the "northern modern" style, of which Lidval was a leading exponent.

Guests enjoy their own winter garden on an intimate, glass-covered veranda.





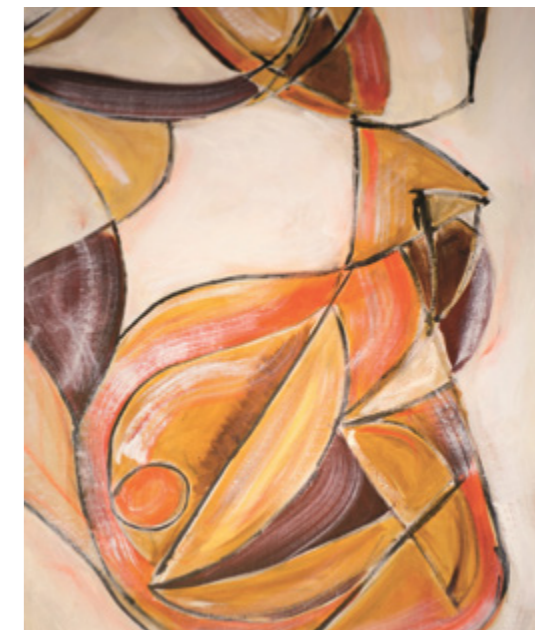
ROOMS ARE FURNISHED WITH BEAUTIFUL ANTIQUE PIECES.



A STURGEON ADDS DRAMA TO THE SPACIOUS BATHROOM.

AVANT-GARDE SUITES

RUSSIAN AVANT-GARDE WAS A BOLD, INFLUENTIAL ART MOVEMENT THAT FLOURISHED FROM 1907 TO 1930. OUR SUITES PAY HOMAGE TO THE GENIUS, INNOVATION AND OUTSTANDING CREATIVITY OF ITS MAIN PROTAGONISTS.





MALEVICH SUITE

Kazimir Malevich (1879-1935) was born in Ukraine to Polish parents and studied at Moscow's School of Painting, Sculpture and Architecture. A pioneer of abstract art, he invented Suprematism, a movement that focused on basic geometric forms and the supremacy of colour in painting. His groundbreaking *Black Square* continues to inspire and challenge artists in equal measure today.

The striking one-bedroom suite named in Malevich's honour is inspired by the dynamic shapes and bright, bold colours the artist loved.





AS WELL AS A DINING TABLE FOR SIX, THE SUITE OFFERS A GUEST
POWDER ROOM AND WET BAR.



GEOMETRIC FORMS, ELEGANT LINES AND A VIBRANT PALETTE COMBINE TO
STRIKING EFFECT IN THE MALEVICH SUITE.



ARCHIPENKO SUITE

Kiev-born artist Alexander Archipenko (1887-1964) left Russia at the age of 21 and moved to Paris, where he associated with avant-garde artists like Pablo Picasso, Georges Braque and Amedeo Modigliani. He was one of the first sculptors to publically exhibit Cubist works, which were a bold departure from the neoclassicism of the time. He emigrated to the United States in 1923, enjoying a successful career for the rest of his life.

This beautiful one-bedroom suite is designed to echo his style with sensual lines, warm tones and Cubist works of art.





FEATURES INCLUDE A SMALL DINING TABLE WITH INLAID MOTHER OF PEARL, A PANTRY AND GUEST POWDER ROOM.





KANDINSKY SUITE

Credited with creating the first truly abstract paintings, Moscow-born Wassily Kandinsky (1866-1944) only took to art at the age of 30. Inspired by an exhibition of French Impressionists, he gave up a career in law to pursue his new passion. Music was an important influence and he is believed to have had a neurological condition called synaesthesia, which meant he could “see” sound and “hear” colour. His most recognisable works include the swirling *Composition VII*, and *Color Study: Squares with Concentric Circles*.

This expansive one-bedroom suite celebrates his genius with elements lifted from his most famous canvases.



A LOVE OF BRIGHT COLOURS AND EARTHY HUES DISTINGUISHES WASSILY KANDINSKY, THE INFLUENTIAL RUSSIAN ARTIST WHO WAS CREDITED WITH PAINTING THE FIRST PURELY ABSTRACT WORKS.





RODCHENKO SUITE

Alexander Rodchenko (1891-1956) was an influential artist, graphic designer, sculptor and photographer, and a founder of the Russian Constructivist movement. He advocated integrating art into daily life and bringing it to the masses, focusing on propaganda posters, advertisements and book covers. Later he achieved great acclaim experimenting with photomontages.

Rodchenko's play of geometric forms against a white background influenced the design of this Studio Suite, which offers its own entry and sitting areas, and can also be used as a second bedroom for Suite 157.





ALEXANDER RODCHENKO WAS ONE OF THE FOUNDERS OF RUSSIAN CONSTRUCTIVISM, FAMOUS FOR HIS INNOVATIVE ADVERTISING AND MAGAZINE DESIGN AND HIS BOLDLY VISUAL POLITICAL POSTERS.





LISSITZKY SUITE

El Lissitzky was an important Russian avant-garde painter, designer and typographer, who helped develop Suprematism with his mentor, Kazimir Malevich. He is known for his 1919-27 Proun series, in which he sought to combine the three-dimensional aspect of architecture in two-dimensional paintings, and for his propaganda poster, *Beat the Whites with the Red Wedge*, in support of the Red Army.

Lissitzky's red wedge is reflected in bold accents throughout the suite. Pride of place is given to a specially commissioned bronze and painted aluminium wall sculpture by US artist Christopher Gulick, inspired by Lissitzky's work.





THIS STRIKING SPACE, WHICH DRAWS FROM THE SIMPLE COLOUR PALETTE LISSITZKY FAVOURED, INCLUDES A DINING TABLE SEATING FOUR, A GUEST POWDER ROOM AND WET BAR.

THE LISSITZKY CAN BE COMBINED WITH NO. 155 TO FORM A TWO-BEDROOM SUITE.

PRESIDENTIAL SUITE

In a class of its own, St Petersburg's grandest suite occupies a corner of the hotel, with views across both Nevsky Prospekt and Mikhailovskaya Ulitsa. It features two bedrooms, two marble bathrooms and a sauna, as well as an exclusive fitness centre with treadmill and cycling machine, a games room and a combined study and library with secret bookcase door leading to the bedroom.

Guests can enjoy privately cooked repasts in the dining room, which seats up to 10 persons. Host an exclusive dinner party before enjoying a drink in the living room bar, or entertain guests by tickling the ivories of the Carl Schroeder grand piano.



THE MAGNIFICENT MUSIC ROOM WITH ANTIQUE GRAND PIANO.



THE PRESIDENTIAL SUITE, THE LARGEST SUITE IN ST PETERSBURG, OCCUPIES A CORNER OF THE HOTEL AND OFFERS STUNNING VIEWS OVER THE CITY.

SPREAD OVER 350M² THE LAVISH SUITE IS ACCESSED THROUGH A GRAND LOBBY WITH A DRAMATIC DOMED, GOLD-LEAF CEILING.

WELCOME

UNIQUE HISTORIC SUITES ● DOSTOEVSKY

THESE BEAUTIFUL, UNIQUE SPACES EVOKE TURN-OF-THE-CENTURY TSARIST ELEGANCE. OUR

IMPERIAL YACHT ● FABERGÉ ● MARIINSKY

UNIQUE HISTORIC SUITES ARE INDIVIDUALLY NAMED AND THEMED. THEY COMBINE CONTEMPORARY

ROMANOV ● ROSSI ● AMBER ● STRAVINSKY

COMFORTS WITH THE OLD-WORLD ELEGANCE BEFITTING ONE OF THE MOST ICONIC HOTELS

PAVAROTTI ● LIDVAL ● AVANT-GARDE SUITES

IN RUSSIA. LOCATED ON THE HISTORIC FLOOR, EACH ROOM BENEFITS FROM HIGH CEILINGS,

RODCHENKO ● ARCHIPENKO ● KANDINSKY

RESTORED ANTIQUES, ITALIAN MARBLE BATHROOMS AND DEDICATED BUTLER SERVICE.

MALEVICH ● LISSITSKY ● PRESIDENTIAL SUITE